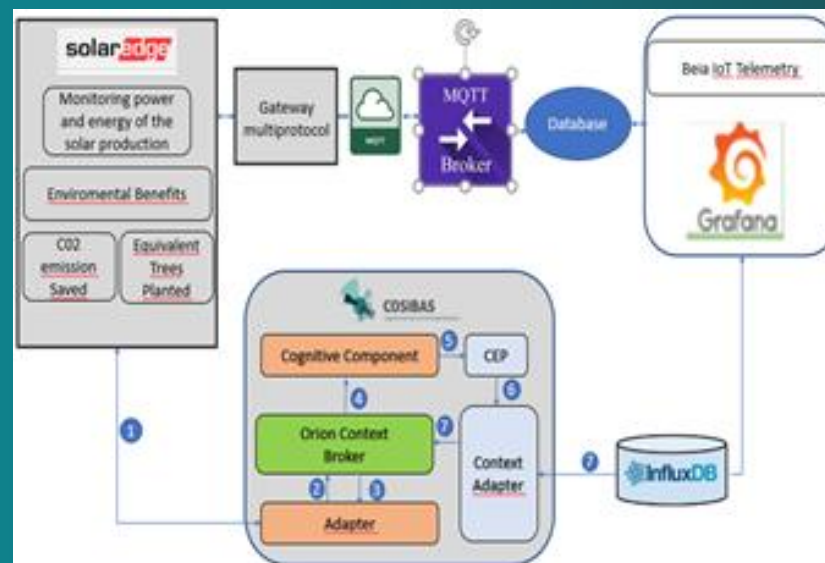


BEIA - Looking for project collaborations, developing telemetry and ICT solutions



Organisational profile

- BEIA (SME) founded in 1991, team of **100 people**, with offices in **Austria, Belgium and Romania**
- R&D performing SME with focus on time critical Artificial Internet of Things (AloT) and a team with experience in R&D service innovation (AI, cloud, big data, quantum security), hardware (sensors, actuators, IoT), information technologies (data analytics, back end, interfaces, front end), integration (software/hardware), **energy efficiency** (integration of PV, monitoring HVAC, light, smart power plugs, location based services using beacons, digital signage using ePaper), communication/ dissemination/marketing, project management.
- Over 8000 commercial projects and over **100 R&D and Innovation projects** (Horizon, Eureka/Eurostars, ERA-Net, Erasmus, Interreg, LIFE, etc.): <http://www.beia.eu>



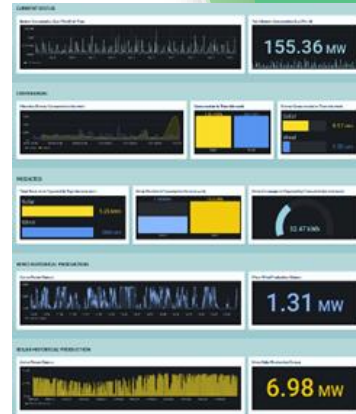
Challenge and Offer

Challenge

- BEIA is looking for partners to join with experience from IoT projects for smart renewable energy, including solar/PV (MICALL19 AISTOR, MICALL20 FinSESCo, SealedGrid, TESTBED2, Power2SME, CitiSim, HUBCAP, Arrowhead Tools, TELE-GREEN, EV-BAT, Hibrivolt, SEDCC, Hydro3D, COSIBAS, BENTRADE, MULTISCALE, BLOW, Exploit4Innomat, etc)

Offer

- Smart grid/PV/EV systems in living lab with 300 solar panels, inverters, smart energy storage in batteries using AI, smart circuit breakers, wind turbine, heat pump, hydrogen fuel cells, micro hydropower plant, hybrid/EV super-fast chargers & vehicles, ETS smart contracts based on blockchain, collaboration with DSO/TSO and SG/RES/ESS, EV/PV stakeholders
- ICT/IoT testbeds for telemetry in the field of **geothermal** (monitoring of carbon footprint and impact on water, soil and air quality), **hydro energy** (tele-monitoring of level and flow, agri-photovoltaics), **solar energy** (measurement of solar radiation in photo-voltaic parks, forecasting of energy production according to meteorology sensors, monitoring inverters), **offshore wind** (floating turbine, telemetry of environmental meteorological and structural parameters).



Specific needs

- **We are looking for partners who**
 1. aim to drive innovative technologies to the market
 2. have profound experiences with leading large-scale projects
 3. have a wide circle of partners around Europe
 4. have core competencies in the RES domain
 5. join a state-of-the-art Living Lab focused on energy, featuring 300 photovoltaic (PV) systems

Beia Consult International

George Suciu, R&D and Innovation Manager

Peroni 16, Sector 4, Bucharest, 041386, ROMANIA

Absberggasse 29/1, 1100 Vienna, AUSTRIA

Rue Montoyer23/4ET 1000 Brussels & TECHNOLOGIEPARK-ZWIJNAARDE 112 BOITE
AA TOREN 9052 Ghent, BELGIUM

✉ Contact: george@beia.eu
Phone: +4021 332 30 06
Mobile: +40 744 914 798
Fax: +4021 332 30 05
Website: www.beia.eu